

## 4. Options

### Tracking & Alert:

Tracking & Alert requires GPS antenna, and setup of the tracking and/or alerting messages. Please refer to the PDMS Application (PotsDOCK Management System) to enable and configure Tracking & Alert.

### External Alert Button:

Connect Normally-CLOSED button, to the **Brown** and **Green** wires (it can be extended for longer runs). The loop needs to be OPEN (eg. pressing button) for 2 seconds to activate Alert state.



### Privacy Handset:

1. The Privacy Handset Kit is ordered separately.
2. Mount the handset cup to the mounting plate.
3. Mount the spacer plate and the mounting bracket, by using the longer screws provided with the kit. (Re-installed the RAM arm-bracket behind these plates).
4. Connect the Privacy Handset 3.5mm plug into the rear cable jack.
5. Privacy Handset mode is active whenever the handset is removed from the cup.



### Earpiece-Jack Mode:

Use a 2.5mm earpiece plugged into the right side of the 9555 handset.

1. During a RJ11 or Bluetooth call, to enable Earpiece-Jack Mode, press and hold the Mute button for 1.5 seconds. The LED flashes **Orange**.
2. To exit Earpiece-Jack Mode and revert to RJ11 or Bluetooth, press the Mute button once.

## 5. Add Bluetooth Device (optional)

**AUDIO:** To configure (pair) to a Bluetooth® headset device:

1. Discovery Mode: **Press and hold for 5 secs** the Bluetooth® button on the cradle. The LED flashes **Blue** and **Orange**.



2. Hold the Headset device button(s) to enter pairing mode.
3. Once paired, the Bluetooth® LED is **Blue** (half intensity).
4. Bluetooth® can be turned ON with a **single press**, and OFF by **press for 2 secs** the Bluetooth® button on the cradle.






**DATA:** To configure (pair) to a Bluetooth® serial data device:

1. Turn OFF any other Bluetooth Audio or Data devices in range nearby.
2. Discovery Mode: **Press and hold for 5 secs** the Bluetooth® button on the cradle. The LED flashes **Blue** and **Orange**.
3. Put the data-device / computer into Discovery mode.
4. Once paired, the Bluetooth® LED will start slow flashing **Blue**.

## 6. Using PotsDOCK 9555

- After applying power to AC power adaptor or turning key/Acc on, the PotsDOCK will beep upon power up
- Wait for phone to power up and register

### PANEL BUTTONS AND INDICATORS:

LOCATION	BUTTON MODE	LED/SOUND
	Out of Call: Toggle Ringer Mode	LED off. Ringer choice sounds as preview.
	During In-Call RJ11 or Bluetooth: Mute (single press)	LED is <b>RED</b> when MUTE.
	During In-Call RJ11 or Bluetooth: Earpiece-jack (1.5 seconds press)  Subsequent single press, exits Earpiece-jack	LED flashes <b>ORANGE</b> .
	Bluetooth® On (single press)	LED is <b>BLUE</b> (half intensity) when Bluetooth® ON and is paired. Fast flashing when searching device. Slow flashing during a call.
	Bluetooth® OFF (1.5 seconds press)	Single beep sounds when turning OFF.
	Discovery Mode (5 seconds press)	LED flashes <b>ORANGE</b> and <b>BLUE</b> . Ringer sounds double (2) beeps.
	Clear Bluetooth® Devices (10 seconds press)	Ringer sounds triple (3) beeps.
	Send Tracking Message (single press)	LED operates according to settings in PDMS. Beep is also configurable according to PDMS
	Clear Alert Mode (7 seconds press)	LED turns <b>GREEN</b> – re-armed & GPS Fix ready. Single Beep sounds.  If LED is Flashing <b>GREEN</b> – No GPS Fix, or No Iridium Signal  LED is OFF when Alert/Tracking is disabled.
 + 	Activate Alert Mode (2 seconds press, BOTH buttons together)	Track LED turns <b>RED</b> when <b>Alert Triggered</b> and single beep sounds.  Track LED Flashing <b>RED</b> when <b>Alert Message sent</b>  Track LED flashing <b>ORANGE</b> when <b>Alert is acknowledged</b>



## QUICK START GUIDE

### iridium PotsDOCK 9555



Suitable for the Iridium 9555  
Portable Satellite Telephone

Beam Communications Pty Ltd



www.beamcommunications.com  
info@beamcommunications.com  
TEL: +61 3 8588 4500 FAX: +61 3 9560 9055

USR03G047012

# 1. Installing PotsDOCK Cradle



- Considerations:
- Affix the base plate in a location that allows easy access & does not obstruct driver
  - Allow sufficient room to easily run cables from the PotsDOCK
  - ONLY use the M4 screws (supplied) to affix the base to the PotsDOCK to avoid any damage
  - For wall mounting use the RAM Bracket with both bases parallel to each other
  - Tighten wing nut on the bracket to securely hold the PotsDOCK
  - Avoid making any sharp bends in the antenna cable when determining the cable route
  - The fixed cables from the PotsDOCK should never be extended, Antenna cables must be approved

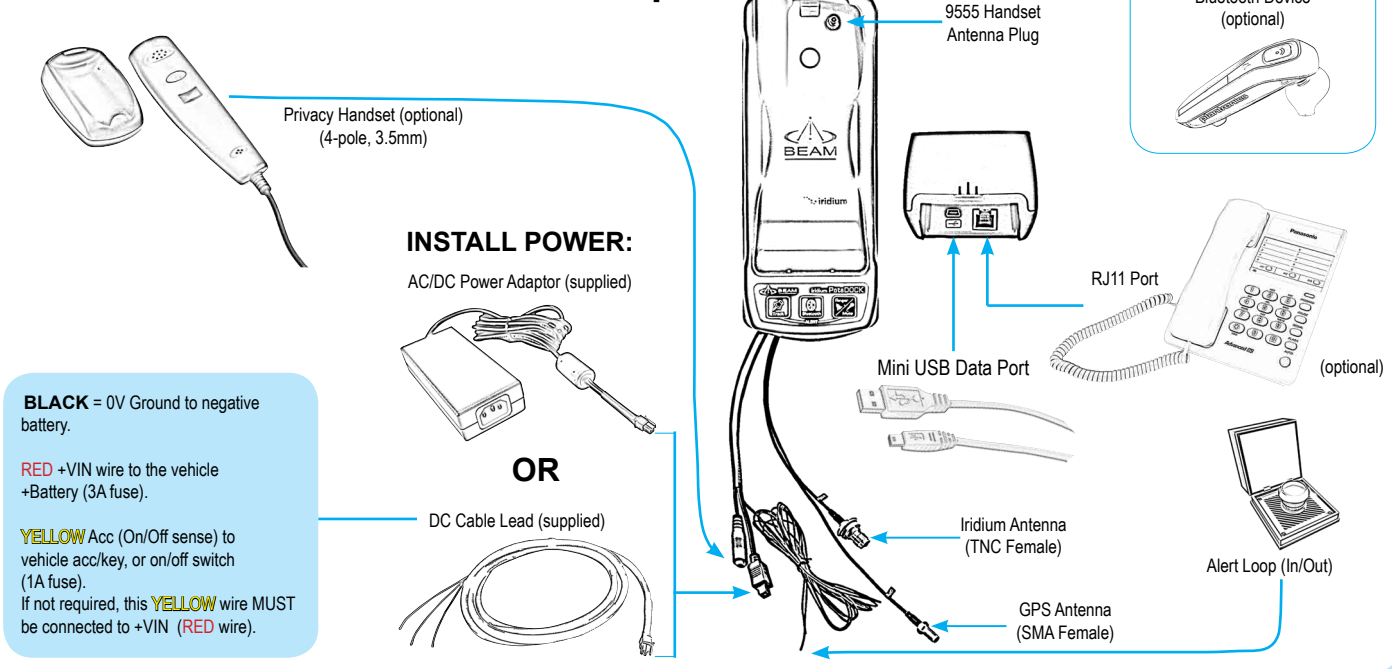
**WARNING:** Your Iridium 9555 Handset requires firmware HT09007 or greater. To check your firmware version on your Iridium 9555 handset press "Menu" then navigate to "Setup" then "Phone Information". For more information and 9555 Handset firmware downloads visit: <http://www.beamcommunications.com/support/potsdock9555>

**NOTE:** For Data operation the USB port on the Iridium 9555 handset must not be used whilst docked in the cradle. Please use the USB port located on the bottom of the 9555 cradle.

# 2. Installation

- DO NOT route cables near areas of intense heat
  - DO NOT pull or strain the cables from the PotsDOCK
- Connecting to Power:**
- Connect AC power Adaptor or DC Cable Lead
  - The PotsDOCK can be connected to a 9-32V DC input > 25 watts
- Connecting to the Antennas:**
- The PotsDOCK has a fixed antenna fly lead ready for connecting to antenna cables for Iridium and GPS.
  - Only certified cables within the Iridium specification should be used
  - Ensure antenna cables are routed avoiding any sharp bends in the cable
  - The antenna should always be installed with clear line of site to the sky
- RJ11 / POTS Telephone (optional)**
- Mount the analogue phone, and plug the RJ11 cable (up to 600m length) into the PotsDOCK RJ11 port.
  - Lift the RJ11 POTS Phone handset "OFFHOOK" and listen for dial tone.
  - Dial (using the full country codes) on the RJ11 telephone keypad.
  - Allow up to 5 seconds for the call to be issued to the 9555 handset, at which point the message appears on 9555: "DPL Call In Progress".
- PotsDOCK USB Data Port:**
- The PotsDOCK has an integrated USB Data Port on the rear. Drivers for this USB port can be download from <http://www.beamcommunications.com/support/potsdock9555>

# PotsDOCK 9555 Installation Set Up



**BLACK** = 0V Ground to negative battery.

**RED** +VIN wire to the vehicle +Battery (3A fuse).

**YELLOW** Acc (On/Off sense) to vehicle acc/key, or on/off switch (1A fuse).  
If not required, this **YELLOW** wire MUST be connected to +VIN (**RED** wire).

# 3. Inserting & Ejecting 9555 Handset

- Inserting:**
- Remove rubber grommet on back of 9555 antenna connection
  - Ensure 9555 handset is turned off
  - Ensure there is no foreign object in the cradle
  - Place the 9555 in the cradle with the base in first
  - The base connector should line up with the base of the 9555
  - Press EJECT button and phone at the same time to securely lock the phone in the docking station.
- Ejecting:**
- To remove the 9555 handset from the cradle **FIRMLY** press the "Eject" button located on the top of the cradle (see diagram).

